

Panel mounted receptacle SCHUKO®

Part no. 17014

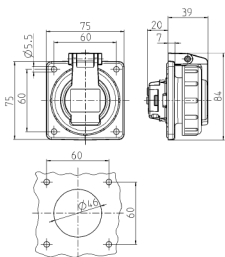


- screw terminals or plug-in terminals
- hinged bayonet lock lid
- rectangular flange
- four fixing holes

Technical specifications

| | |
|---------------------------|-----------------|
| Ampere | 16 A |
| Poles | 2 p+E |
| Voltage | 230 V |
| Connection technology | Screw terminals |
| Contact | standard |
| Protection type | IP 68 |
| Shutter | true |
| Flange | 75x75 mm |
| Fixing hole | 60x60 mm |
| Weight | 108 g |
| Declaration of Conformity | VDE, EAC |

Drawing



Drawing
1 MB 627

Dim. in mm