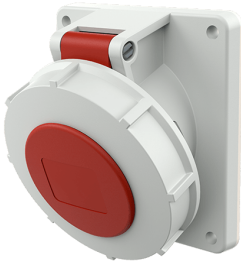


## Panel mounted receptacle with TwinCONTACT

Part no. 1805

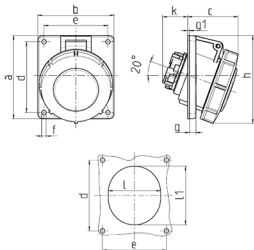


- screwless spring terminals
- suitable for through wiring
- 20° inclination
- receptacles are designed for adding an auxiliary contact switch

### Technical specifications

Ampere	32 A
Poles	4 p
Voltage	400 V
Clock position	6 h
Hertz	50-60 Hz
Connection technology	Screwless - TwinCONTACT
Contact	standard
Protection type	IP 67
Flange	100x92 mm
Fixing hole	85x77 mm
Inclination	20 °
Weight	290 g
Declaration of Conformity	VDE, EAC, CQC

### Drawing



Drawing 1 MB 466	Amp. Poles	16			32		
		3	4	5	3	4	5
Dim. in mm	a	73.5	100	100	100	100	100
	b	64	92	92	92	92	92
	c	52	60	62	66	66	66
	d	60	85	85	85	85	85
	e	52	77	77	77	77	77
	f	5.5	5.5	5.5	5.5	5.5	5.5
	g	7	8	8	8	8	8
	g-1	2	2	2	2	2	2
	h	84	100	106	109	109	113
	k	31	31	31	44	44	54
	l	52	55	65	70	70	73
	l1	60	63	72	82	82	85
	Terminal for cond. cross section (mm <sup>2</sup> ) min.-max.	1.5	1.5	1.5	2.5	2.5	2.5
		-4	-4	-4	-6	-6	-6