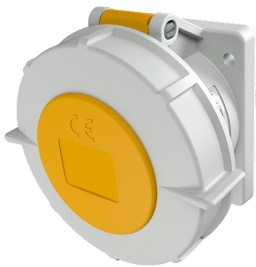


Panel mounted receptacle with TwinCONTACT

Part no. 1818

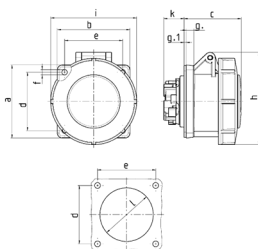


- screwless spring terminals
- suitable for through wiring straight
-

Technical specifications

| | |
|---------------------------|-------------------------|
| Ampere | 32 A |
| Poles | 5 p |
| Voltage | 110 V |
| Clock position | 4 h |
| Hertz | 50-60 Hz |
| Connection technology | Screwless - TwinCONTACT |
| Contact | standard |
| Protection type | IP 67 |
| Flange | 85x75 mm |
| Fixing hole | 60x60 mm |
| Weight | 287 g |
| Declaration of Conformity | VDE, EAC, CQC |

Drawing



| Drawing 1 MB 467 | Amp. Poles | 16 | | | 32 | | |
|--|---------------|-----|-----|-----|-----|-----|-----|
| | | 3 | 4 | 5 | 3 | 4 | 5 |
| Dim. in mm | a | 75 | 75 | 75 | 85 | 85 | 85 |
| | b | 75 | 75 | 75 | 75 | 75 | 75 |
| | c | 60 | 61 | 61 | 69 | 69 | 72 |
| | d | 60 | 60 | 60 | 60 | 60 | 60 |
| | e | 60 | 60 | 60 | 60 | 60 | 60 |
| | f | 5.5 | 5.5 | 5.5 | 5.5 | 5.5 | 5.5 |
| | g | 8 | 8 | 8 | 8 | 8 | 8 |
| | g-1 | 2 | 2 | 2 | 2 | 2 | 2 |
| | h | 83 | 88 | 95 | 99 | 99 | 105 |
| | i | 78 | 85 | 96 | 103 | 103 | 110 |
| | k | 21 | 21 | 21 | 28 | 28 | 38 |
| | l | 43 | 52 | 54 | 60 | 60 | 65 |
| Terminal for cond. cross section (mm ²) min.-max. | | 1.5 | 1.5 | 1.5 | 2.5 | 2.5 | 2.5 |
| | | -4 | -4 | -4 | -6 | -6 | -6 |