

Wall mounted inlet

Part no. 1959

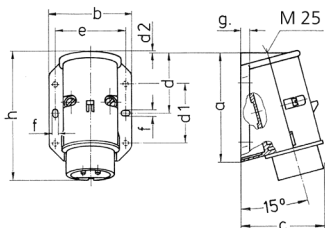


- screw terminals
- external fixing
- one cable entry at top and one blind cable entry (can be cut out) at the back side

Technical specifications

Ampere	16 A
Poles	2 p
Voltage	50 V
Clock position	10 h
Connection technology	Screw terminals
Contact	standard
Protection type	IP 44
Weight	137 g
Declaration of Conformity	EAC, CQC

Drawing



Drawing 2 MB 160	Amp. Poles	16		32	
		2	3	2	3
Dim. in mm	a	96	96	96	96
	b	73	73	73	73
	c	74	74	74	74
	d	53	53	53	53
	d1	52	52	52	52
	d2	2	2	2	2
	e	62	62	62	62
	f	5.3	5.3	5.3	5.3
	g	8	8	8	8
	h	116	116	116	116
Terminal for cond. cross section (mm ²) min.-max.		4	4	4	4
		-10	-10	-10	-10