

Wall mounted inlet

Part no. 1975

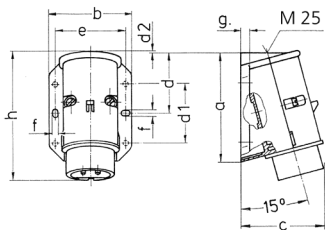


- screw terminals
- external fixing
- one cable entry at top and one blind cable entry (can be cut out) at the back side

Technical specifications

Ampere	32 A
Poles	3 p
Voltage	20-25 V
Hertz	50-60 Hz
Connection technology	Screw terminals
Contact	standard
Protection type	IP 44
Weight	166 g
Declaration of Conformity	EAC

Drawing



Drawing	Amp.	16		32		
		2	3	2	3	
2 MB 160	Poles					
Dim. in mm	a	96	96	96	96	
	b	73	73	73	73	
	c	74	74	74	74	
	d	53	53	53	53	
	d1	52	52	52	52	
	d2	2	2	2	2	
	e	62	62	62	62	
	f	5.3	5.3	5.3	5.3	
	g	8	8	8	8	
	h	116	116	116	116	
	Terminal for cond. cross section (mm ²) min.-max.		4	4	4	4
			-10	-10	-10	-10