

## Wall mounted receptacle

Part no. 21330A

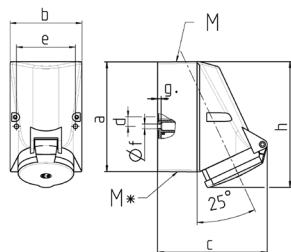


- screw terminals
- highly heat resistant contact carrier
- nickel plated contacts
- internal fixing
- enclosure base can be turned 180°

## Technical specifications

|                           |   |
|---------------------------|---|
| Ampere                    | 32 A  |
| Poles                     | 4 p   |
| Voltage                   | 230 V   |
| Clock position            | 9 h   |
| Hertz                     | 50-60 Hz  |
| Connection technology     | Screw terminals   |
| Contact                   | highly heat resistant contact carrier, nickel plated contacts |
| Protection type           | IP 44   |
| Weight                    | 350 g   |
| Declaration of Conformity | EAC   |

## Drawing



| 1 MB 209<br>1 MB 43 | Amp.<br>Poles   | 16                               |     |     | 32                          |       |       |
|---------------------|---|----------------------------------|-----|-----|-----------------------------|-------|-------|
|                     |   | 3                                | 4   | 5   | 3                           | 4     | 5     |
| Dim. in mm          | a   | 87                               | 128 | 128 | 128                         | 128   | 128   |
|                     | b   | 64                               | 84  | 84  | 84                          | 84    | 84    |
|                     | c   | 99                               | 122 | 124 | 136                         | 136   | 138   |
|                     | d   | 40                               | 11  | 11  | 11                          | 11    | 11    |
|                     | e   | 50                               | 68  | 68  | 68                          | 68    | 68    |
|                     | f   | 4.5                              | 5.3 | 5.3 | 5.3                         | 5.3   | 5.3   |
|                     | g   | 4                                | 4   | 4   | 4                           | 4     | 4     |
|                     | h   | 115                              | 144 | 145 | 158                         | 158   | 160   |
|                     | M   | 20                               | 25  | 25  | 32                          | 32    | 32    |
|                     | M*  | M 20 2xM25 (blind) to be cut out |     |     | 2xM25 (blind) to be cut out |       |       |
|                     | Max. cable diam. (mm)   | 15                               | 18  | 18  | 18/25                       | 18/25 | 18/25 |
|                     | Terminal for cond. cross section (mm <sup>2</sup> ) min.-max. | 1.5                              | 1.5 | 1.5 | 2.5                         | 2.5   | 2.5   |
|                     |   | -4                               | -4  | -4  | -10                         | -10   | -10   |