

Wall mounted receptacles

Part no. 23964

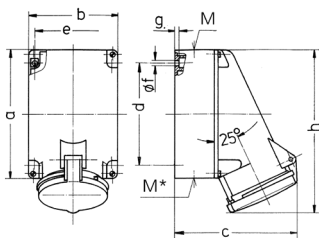


- screw terminals
- highly heat resistant contact carrier
- nickel plated contacts
- internal fixing
- enclosure base can be turned 180°
- products with pilot contact on request

Technical specifications

Ampere	63 A
Poles	4 p
Voltage	400 V
Clock position	6 h
Hertz	50-60 Hz
Connection technology	Screw terminals
Contact	X-CONTACT®, nickel plated contacts, highly heat resistant contact carrier
Protection type	IP 44
Weight	957 g
Declaration of Conformity	EAC

Drawing



Drawing 1 MB 213	Amp. Poles	63		
		3	4	5
Dim. in mm	a	170	170	170
	b	118	118	118
	c	164	164	164
	d	134.5	134.5	134.5
	e	103	103	103
	f	6.1	6.1	6.1
	g	6	6	6
	h	216	216	216
	M	40	40	40
	M*	2xM40 (blind) to be cut out		
	Max. cable diam. (mm)	32	32	32
	Terminal for cond. cross section (mm²) min-max.	6	6	6
		-25	-25	-25