

Panel mounted receptacle

Part no. 2443

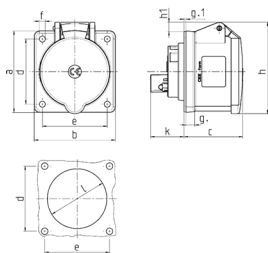


- screw terminals
- highly heat resistant contact carrier
- nickel plated contacts
- straight

Technical specifications

Ampere	16 A
Poles	7 p
Voltage	400 V
Clock position	6 h
Hertz	50-60 Hz
Connection technology	Screw terminals
Contact	highly heat resistant contact carrier, nickel plated contacts
Protection type	IP 44
Flange	75x75 mm
Fixing hole	60x60 mm
Weight	198 g
Declaration of Conformity	EAC

Drawing



Drawing	Amp.	16	32
1 MB 247	Poles	7	7
Dim. in mm	a	75	85
	b	75	75
	c	53	65
	d	60	60
	e	60	60
	f	5.5	5.5
	g	8	8
	g-1	2	2
	h	83	100
	h1	8	12
	k	32	39
	l	54	62
Terminal for cond. cross section (mm ²) min.-max.		1.5 —4	2.5 —10