

Panel mounted inlet

Part no. 2624

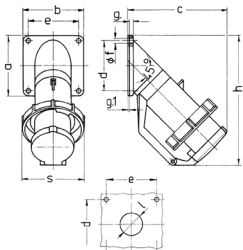


- screw terminals
- with hinged lid

Technical specifications

| | |
|---------------------------|-----------------|
| Ampere | 63 A |
| Poles | 4 p |
| Voltage | 500 V |
| Clock position | 7 h |
| Hertz | 50-60 Hz |
| Connection technology | Screw terminals |
| Contact | standard |
| Protection type | IP 67 |
| Weight | 748 g |
| Declaration of Conformity | VDE, EAC |

Drawing



| Drawing Z MB 40 | Amp. Poles | 16 | | | | 32 | | 63 | |
|--|---------------|------|-----|-----|-----|-----|-----|-----|-----|
| | | 5 | 3 | 4 | 5 | 4 | 5 | | |
| Dim. in mm | a | 85 | 85 | 85 | 85 | 114 | 114 | 114 | 114 |
| | b | 85 | 85 | 85 | 85 | 114 | 114 | 114 | 114 |
| | c | 141 | 141 | 141 | 144 | 180 | 180 | 180 | 180 |
| | d | 70 | 70 | 70 | 70 | 90 | 90 | 90 | 90 |
| | e | 70 | 70 | 70 | 70 | 90 | 90 | 90 | 90 |
| | f | 6.2 | 6.2 | 6.2 | 6.2 | 6.2 | 6.2 | 6.2 | 6.2 |
| | g | 6 | 6 | 6 | 6 | 6 | 6 | 6 | 6 |
| | g.1 | 2 | 2 | 2 | 2 | 2 | 2 | 2 | 2 |
| | h | 181 | 181 | 181 | 188 | 242 | 242 | 242 | 242 |
| | s | 86 | 93 | 93 | 100 | 113 | 113 | 113 | 113 |
| | l | 30 | 30 | 30 | 30 | 40 | 40 | 40 | 40 |
| Terminal for cond. cross section (mm ²) min.-max. | 1 | 2.5 | 2.5 | 2.5 | 2.5 | 4 | 4 | 4 | 4 |
| | | -2.5 | -6 | -6 | -6 | -16 | -16 | -16 | -16 |