

Panel mounted inlet

Part no. 2692

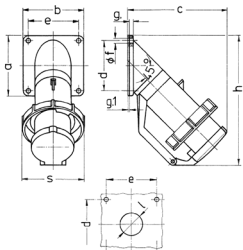


- screw terminals
- high heat resistant contact carrier
- nickel plated contacts
- with hinged lid

Technical specifications

Ampere	32 A
Poles	4 p
Voltage	400-440 V
Clock position	3 h
Hertz	50-60 Hz
Connection technology	Screw terminals
Contact	nickel plated contacts, highly heat resistant contact carrier
Protection type	IP 67
Weight	354 g
Declaration of Conformity	VDE, EAC

Drawing



Drawing	Amp.	16				32		63	
		Poles		3	4	5	4	5	
2 MB 40									
Dim. in mm									
a		85	85	85	85	114	114		
b		85	85	85	85	114	114		
c		141	141	141	144	180	180		
d		70	70	70	70	90	90		
e		70	70	70	70	90	90		
f		6.2	6.2	6.2	6.2	6.2	6.2		
g		6	6	6	6	6	6		
g.1		2	2	2	2	2	2		
h		181	181	181	188	242	242		
s		86	93	93	100	113	113		
l		30	30	30	30	40	40		
Terminal for cond. cross section (mm ²) min.-max.		1	2.5	2.5	2.5	4	4		
		-2.5	-6	-6	-6	-16	-16		