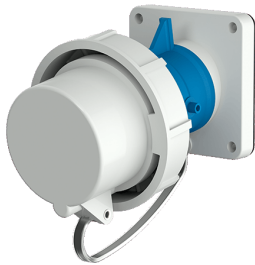


## Panel mounted inlet

Part no. 3531

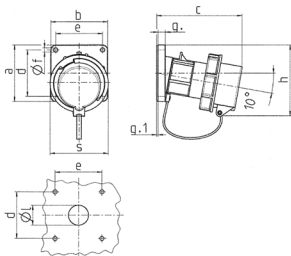


- screw terminals
- with protective cover

## Technical specifications

Ampere	16 A
Poles	3 p
Voltage	230 V
Clock position	6 h
Hertz	50-60 Hz
Connection technology	Screw terminals
Contact	standard
Protection type	IP 67
Weight	212 g
Declaration of Conformity	VDE, EAC

## Drawing



Drawing	Amp.	16			32			63		
		Poles			3	4	5	3	4	5
2 MB 62										
Dim. in mm		a	b	c	d	e	f	g	g.1	h
		85	85	85	85	85	108	108	108	101
		85	85	85	85	85	101	101	101	132
		132	132	131	131	137	164	164	164	70
		70	70	70	70	70	85	85	85	70
		70	70	70	70	70	77	77	77	6.3
		6.3	6.3	6.3	6.3	6.3	6.5	6.5	6.5	11
		11	11	11	11	11	12	12	12	2
		2	2	2	2	2	2	2	2	100
		100	107	108	108	111	130	130	130	70
		70	87	94	94	102	114	114	114	30
		30	30	30	30	30	40	40	40	1
		1	1	2,5	2,5	2,5	6	6	6	
		Terminal for cond. cross section (mm <sup>2</sup> ) min.-max.	—2.5—2.5	—6—6	—6—6	—6—6	—16—16	—16—16	—16—16	