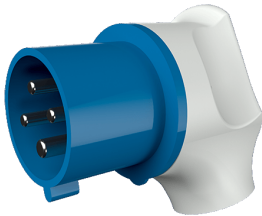


Angled plug
Part no. 3646



- screw terminals
- nickel plated contacts
- with grommet
- especially suited for use with receptacles of the Cepex range

Technical specifications

Ampere	32 A
Poles	4 p
Voltage	230 V
Clock position	9 h
Hertz	50-60 Hz
Connection technology	Screw terminals
Contact	nickel plated contacts
Protection type	IP 44
Weight	230 g
Declaration of Conformity	EAC, CQC

Drawing

