

## Panel mounted inlet

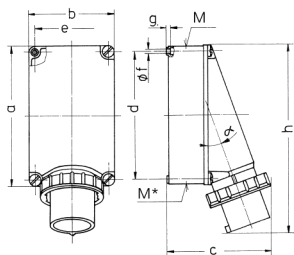
Part no. 371



## Technical specifications

Ampere	63 A
Poles	5 p
Voltage	600-690 V
Clock position	5 h
Hertz	50-60 Hz
Connection technology	Screw terminals
Contact	standard
Protection type	IP 67
Shutter	false
Enclosure material	Plastic
Weight	921 g

## Drawing



Drawing 2 MB 36	Amp. Poles	63			125	
		3	4	5	4	5
Dim. in mm	a	170	170	170	264	264
	b	118	118	118	163	163
	c	171	171	171	205	205
	d	134.5	134.5	134.5	240	240
	e	103	103	103	140	140
	f	6.1	6.1	6.1	8.1	8.1
	g	6	6	6	8	8
	h	250	250	250	355	355
	M	40	40	40	50	50
	M*	2x40	2x40	2x40	50	50
	α	25°	25°	25°	20°	20°
	Max. cable diam. (mm)	27	27	27	38	38
	Terminal for cond. cross section (mm²) min.-max.	6	6	6	16	16
		-16	-16	-16	-35	-35