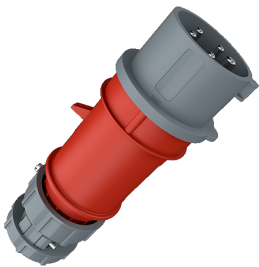


**Plug PowerTOP®**

Part no. 3935

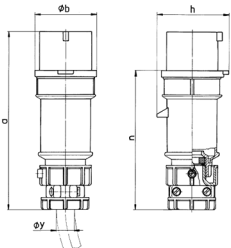


- screw terminals
- highly heat resistant contact carrier
- nickel plated contacts
- cable gland and external cable grip

**Technical specifications**

Ampere	16 A
Poles	5 p
Voltage	400 V
Clock position	6 h
Hertz	50-60 Hz
Connection technology	Screw terminals
Contact	highly heat resistant contact carrier, nickel plated contacts
Protection type	IP 44
Weight	241 g
Declaration of Conformity	VDE, EAC, CQC

**Drawing**



Drawing 2 MB 174	Amp. Poles	16			32		
		3	4	5	3	4	5
Dim. in mm	a	162	172	186	199	199	213
	b	54	60	69	72	72	79
	h	60	67	77	83	83	91
	n	126	136	149	154	154	169
	y	19	19	22	24.5	24.5	28.5
Terminal for cond. cross		1	1	1	2.5	2.5	2.5
section (mm <sup>2</sup> ) min.-max.		-2.5	-2.5	-2.5	-6	-6	-6