

## Flange

Part no. 40102

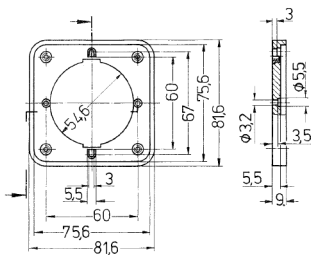


- for panel mounted receptacles: product group 1056 (screw terminals): all 16 A, 3 p to 5 p as well as 32 A, 5 p in special form (comp. type 1276) product group 1134 (screwless, TwinCONTACT): all 16 A, 3 p to 5 p

## Technical specifications

Weight	29 g
Declaration of Conformity	EAC

## Drawing



Drawing  
1 MB 227  
Dim. in mm