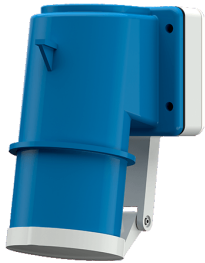


## Panel mounted inlet

Part no. 402

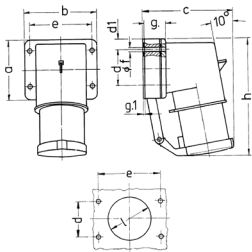


- screw terminals with hinged lid

## Technical specifications

Ampere	32 A
Poles	3 p
Voltage	230 V
Clock position	6 h
Hertz	50-60 Hz
Connection technology	Screw terminals
Contact	standard
Protection type	IP 44
Weight	323 g
Declaration of Conformity	VDE, EAC, CQC

## Drawing



Drawing	Amp.	16		32		
		Poles		3	4	5
2 MB 43		4	5	3	4	5
Dim. in mm						
a		85	85	75	75	75
b		85	85	90	90	90
c		104	106	115	115	117
d		64	64	45	45	45
d1		10	10	13	13	13
e		64	64	78	78	78
f		5.5	5.5	5.5	5.5	5.5
g		27	27	27	27	27
g.1		2	2	1	1	1
h		140	140	150	150	150
l		50	50	55	55	55
Terminal for cond. cross section (mm <sup>2</sup> ) min.-max.		1	1	2.5	2.5	2.5
		-2.5	-2.5	-6	-6	-6