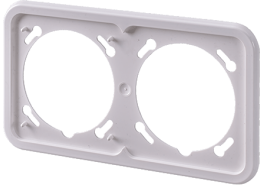


Cepex masking frame

Part no. 41424

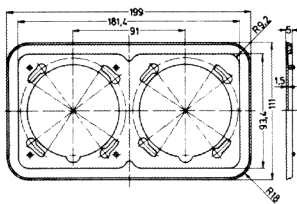


- double
- matching all Cepex flush mounted and panel mounted 16 A and 32 A receptacles for horizontal installation of two receptacles

Technical specifications

| | |
|---------------------------|------|
| Weight | 30 g |
| Declaration of Conformity | EAC |

Drawing



Drawing
1 MB 364
Dim. in mm