

Cepex panel mounted receptacle

Part no. 4263

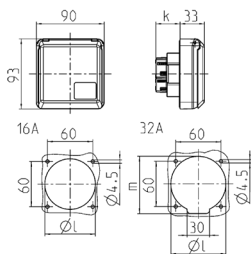


- screw terminals
- suitable for installation in cable ducts and columns
- meeting DIN 18032 standards for ball rebound

Technical specifications

| | |
|---------------------------|----------|
| Ampere | 32 A |
| Poles | 5 p |
| Voltage | 400 V |
| Clock position | 6 h |
| Hertz | 50-60 Hz |
| Protection type | IP 44 |
| Shutter | false |
| Weight | 255 g |
| Declaration of Conformity | VDE, EAC |

Drawing



| Drawing | Amp. | 16 | | | 32 | | |
|---|-------|-----|-----|-----|-----|-----|-----|
| | | 3 | 4 | 5 | 3 | 4 | 5 |
| 1 MB 315 | Poles | | | | | | |
| Dim. in mm | k | 32 | 32 | 32 | 48 | 48 | 48 |
| | l | 50 | 60 | 67 | 65 | 65 | 73 |
| | m | - | - | - | 70 | 70 | 76 |
| Terminal for cond. cross section (mm ²) min.-max. | | 1.5 | 1.5 | 1.5 | 2.5 | 2.5 | 2.5 |
| | | -4 | -4 | -4 | -6 | -6 | -6 |