

## Panel mounted inlet

Part no. 444

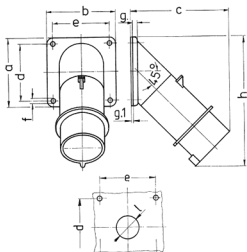


- screw terminals

## Technical specifications

Ampere	32 A
Poles	5 p
Voltage	400 V
Clock position	6 h
Hertz	50-60 Hz
Connection technology	Screw terminals
Contact	standard
Protection type	IP 44
Weight	275 g
Declaration of Conformity	VDE, EAC

## Drawing



Drawing Z MB 39	Amp. Poles	16		32		
		5	3	4	5	
Dim. in mm	a	85	85	85	85	
	b	85	85	85	85	
	c	122	126	126	129	
	d	70	70	70	70	
	e	70	70	70	70	
	f	6.2	6.2	6.2	6.2	
	g	6	6	6	6	
	g.1	2	2	2	2	
	h	161	163	163	170	
	l	30	30	30	30	
Terminal for cond. cross section (mm <sup>2</sup> ) min.-max.	1	2.5	2.5	2.5	2.5	
		-2,5	-6	-6	-6	