

## Panel mounted inlet

Part no. 476

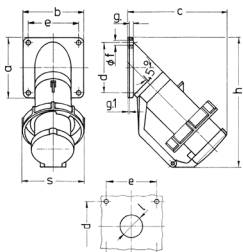


- screw terminals
- with hinged lid

## Technical specifications

Ampere	63 A
Poles	4 p
Voltage	230 V
Clock position	9 h
Hertz	50-60 Hz
Connection technology	Screw terminals
Contact	standard
Protection type	IP 67
Weight	748 g
Declaration of Conformity	EAC

## Drawing



Drawing	Amp.	16				32		63	
		Poles		5	3	4	5	4	5
2 MB 40									
Dim. in mm									
a		85	85	85	85	114	114	114	114
b		85	85	85	85	114	114	114	114
c		141	141	141	144	180	180	180	180
d		70	70	70	70	90	90	90	90
e		70	70	70	70	90	90	90	90
f		6.2	6.2	6.2	6.2	6.2	6.2	6.2	6.2
g		6	6	6	6	6	6	6	6
g.1		2	2	2	2	2	2	2	2
h		181	181	181	188	242	242	242	242
s		86	93	93	100	113	113	113	113
l		30	30	30	30	40	40	40	40
Terminal for cond. cross section (mm <sup>2</sup> ) min.-max.		1	2.5	2.5	2.5	4	4	4	4
		-2.5	-6	-6	-6	-16	-16	-16	-16