

Cepex panel mounted receptacle SCHUKO®

Part no. 4977

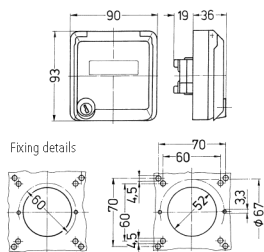


- screw terminals
- with labelling field
- with safety lock
- two keys
- cannot be dismantled when locked
- on request with identical locks
- suitable for installation in cable ducts and columns
- with identical locks: part no + index G

Technical specifications

| | |
|---------------------------|----------|
| Ampere | 16 A |
| Poles | 3 p+E |
| Voltage | 230 V |
| Hertz | 50-60 Hz |
| Protection type | IP 44 |
| Shutter | false |
| Weight | 167 g |
| Declaration of Conformity | EAC |

Drawing



Drawing
1 MB 305
Dim. in mm