

Wall mounted receptacle

Part no. 7012A

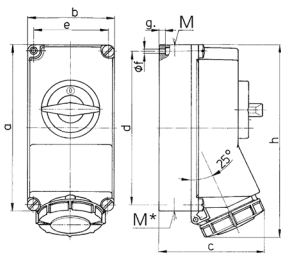


- screw terminals
- switched
- mechanical DUO-interlock
- receptacles can be padlocked

Technical specifications

| | |
|---------------------------|-----------------|
| Ampere | 16 A |
| Poles | 3 p |
| Voltage | 230 V |
| Clock position | 6 h |
| Hertz | 50-60 Hz |
| Connection technology | Screw terminals |
| Contact | standard |
| Protection type | IP 67 |
| Enclosure material | Plastic |
| Weight | 1022 g |
| Declaration of Conformity | VDE, EAC, CQC |

Drawing



| Drawing 1 MB 207 | Amp. Poles | 16 | | | 32 | | |
|---------------------|---|-----------------|------|------|-----------------|------|------|
| | | 3 | 4 | 5 | 3 | 4 | 5 |
| Dim. in mm | a | 225 | 225 | 225 | 225 | 225 | 225 |
| | b | 118 | 118 | 118 | 118 | 118 | 118 |
| | c | 144 | 146 | 147 | 152 | 152 | 153 |
| | d | 208 | 208 | 208 | 208 | 208 | 208 |
| | e | 101 | 101 | 101 | 101 | 101 | 101 |
| | f | 6.3 | 6.3 | 6.3 | 6.3 | 6.3 | 6.3 |
| | g | 8 | 8 | 8 | 8 | 8 | 8 |
| | h | 252 | 255 | 259 | 268 | 268 | 274 |
| | M | 1xM25 and 1xM32 | | | 1xM25 and 1xM32 | | |
| | M* | 2x25 | 2x25 | 2x25 | 2x25 | 2x25 | 2x25 |
| | Max. cable diam. (mm) | 25 | 25 | 25 | 25 | 25 | 25 |
| | Terminal for cond. cross section (mm ²) min.-max. | 1.5 | 1.5 | 1.5 | 2.5 | 2.5 | 2.5 |
| | | -4 | -4 | -4 | -10 | -10 | -10 |