

Wall mounted receptacle

Part no. 7061

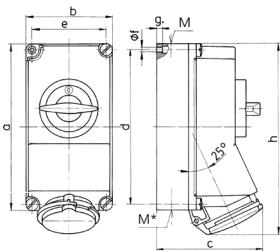


- screw terminals
- switched
- mechanical DUO-interlock
- highly heat resistant contact carrier
- nickel plated contacts
- 3 pole switch
- receptacles can be padlocked

Technical specifications

| | |
|---------------------------|-----------------|
| Ampere | 32 A |
| Poles | 7 p |
| Voltage | 400 V |
| Clock position | 6 h |
| Hertz | 50-60 Hz |
| Connection technology | Screw terminals |
| Contact | standard |
| Protection type | IP 44 |
| Enclosure material | Plastic |
| Weight | 1227 g |
| Declaration of Conformity | EAC |

Drawing



| Drawing | Amp. | 16 | 32 |
|---|-------|---------------|---------------|
| 1 MB 383 | Poles | 7 | 7 |
| Dim. in mm | a | 225 | 225 |
| | b | 118 | 118 |
| | c | 141 | 146 |
| | d | 208 | 208 |
| | e | 101 | 101 |
| | f | 6.3 | 6.3 |
| | g- | 8 | 8 |
| | h | 254 | 264 |
| | M | 1x32 and 1x25 | 1x32 and 1x25 |
| | M* | 2x25 | 2x25 |
| Max. cable diam. (mm) | | 25 | 25 |
| Terminal for cond. cross section (mm ²) min.-max. | | 1.5 | 2.5 |
| | | —4 | —10 |