

## EverGUM receptacle combination

Part no. 71045

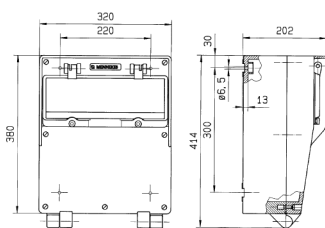


- solid rubber enclosure, signal yellow RAL 1003
- pre-wired for installation

## Technical specifications

CEE 32 A, 4 p, 400 V	1
CEE 16 A, 4 p, 400 V	2
French/Belgian standard	4
Fusing	<ul style="list-style-type: none"> <li>• 1 RCD 63 A, 4 p, 0.03 A</li> <li>• 1 MCB 32 A, 3 p, C</li> <li>• 2 MCB's 16 A, 3 p, C</li> <li>• 2 MCB's 16 A, 1 p+N, B</li> </ul>
Pre-fuse max.	63 A
InA	43 A
RDF	0.45
Connection / feeder cable	<ul style="list-style-type: none"> <li>• for 2 cables up to 5 x 25 mm<sup>2</sup></li> </ul>
Protection type	IP 44
Shutter	false
Enclosure material	Solid rubber
Weight	10930 g
Height	380 mm
Width	320 mm

## Drawing



Drawing  
5 MB 41

Dim. in mm