

## EverGUM receptacle combination

Part no. 7202186B

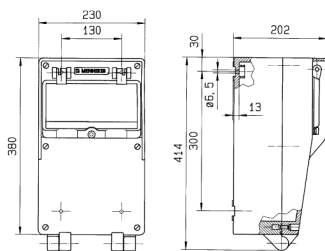


- solid rubber enclosure, signal yellow RAL 1003
- pre-wired for installation

## Technical specifications

CEE 16 A, 5 p, 400 V	2
Swiss standard - Type 23	2
Swiss standard - Type 25	1
Fusing	<ul style="list-style-type: none"> <li>• 1 RCD 63 A, 4 p, 0.03 A</li> <li>• 2 MCB's 16 A, 3 p, C</li> <li>• 1 MCB 16 A, 1 p, C</li> </ul>
Connection / feeder cable	<ul style="list-style-type: none"> <li>• for 1 cable up to 5 x 16 mm<sup>2</sup></li> </ul>
Protection type	IP 44
Shutter	false
Enclosure material	Solid rubber
Weight	8729 g
Height	380 mm
Width	230 mm

## Drawing



Drawing  
5 MB 42  
Dim. in mm