

## Wall mounted receptacle

Part no. 7305

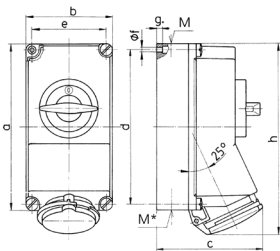


- screw terminals
- switched
- mechanical DUO-interlock
- highly heat resistant contact carrier
- nickel plated contacts
- 6 pole switch with 2 auxiliary contacts (1 NO and 1 NC)
- receptacles can be padlocked

## Technical specifications

Ampere	32 A
Poles	7 p
Voltage	400 V
Clock position	6 h
Hertz	50-60 Hz
Connection technology	Screw terminals
Contact	standard
Protection type	IP 44
Enclosure material	Plastic
Weight	1578 g
Declaration of Conformity	EAC

## Drawing



Drawing	Amp.	16	32
1 MB 383	Poles	7	7
Dim. in mm	a	225	225
	b	118	118
	c	141	146
	d	208	208
	e	101	101
	f	6.3	6.3
	g-	8	8
	h	254	264
	M	1x32 and 1x25	1x32 and 1x25
	M*	2x25	2x25
Max. cable diam. (mm)		25	25
Terminal for cond. cross section (mm <sup>2</sup> ) min.-max.		1.5	2.5
		—4	—10