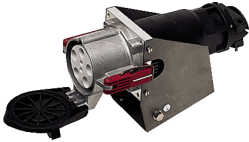


Wall mounted receptacle

Part no. 75226

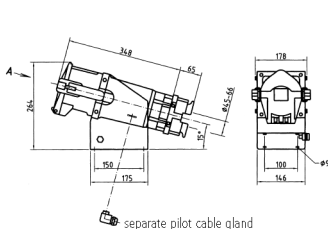


- screw terminals
- external fixing
- cable entry at top
- with cable gland
- seawater resistant products are available on request
- if required, pilot cables can be introduced separately into plugs/ enclosures, please add „PK“ to the part number

Technical specifications

Ampere	200 A
Poles	5 p
Voltage	400 V
Clock position	6 h
Hertz	50-60 Hz
Connection technology	Screw terminals
Contact	standard
Protection type	IP 67
Weight	5047 g
Declaration of Conformity	EAC

Drawing



Drawing
1 MB 385

Dim. in mm