

## Wall mounted inlet

Part no. 801

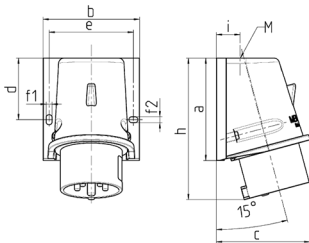


- screw terminals
- for external fixing
- for hinged lids for retrofitting see accessories

## Technical specifications

|                           |                 |
|---------------------------|-----------------|
| Ampere                    | 16 A            |
| Poles                     | 5 p             |
| Voltage                   | 400 V           |
| Clock position            | 6 h             |
| Hertz                     | 50-60 Hz        |
| Connection technology     | Screw terminals |
| Contact                   | standard        |
| Protection type           | IP 44           |
| Weight                    | 215 g           |
| Declaration of Conformity | VDE, EAC        |

## Drawing



| Drawing<br>Z MB 221 | Amp.<br>Poles | 16     |        | 32     |        |        |
|---------------------|---------------|--------|--------|--------|--------|--------|
|                     |               | 4      | 5      | 3      | 4      | 5      |
| Dim. in mm          | a             | 92.5   | 92.5   | 102    | 102    | 102    |
|                     | b             | 87     | 87     | 94     | 94     | 94     |
|                     | c             | 84.5   | 84.5   | 94     | 94     | 94     |
|                     | d             | 55.5   | 55.5   | 62     | 62     | 62     |
|                     | e             | 76     | 76     | 84     | 84     | 84     |
|                     | f1            | 5.3    | 5.3    | 5.3    | 5.3    | 5.3    |
|                     | f2            | 5.3    | 5.3    | 5.3    | 5.3    | 5.3    |
|                     | h             | 128    | 128    | 146    | 146    | 146    |
|                     | i             | 21.5   | 21.5   | 26     | 26     | 26     |
|                     | M             | 25x1.5 | 25x1.5 | 25x1.5 | 25x1.5 | 32x1.5 |