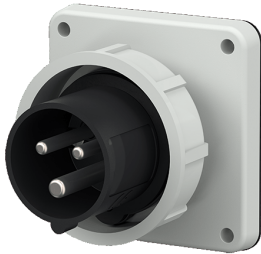


Panel mounted inlet

Part no. 833

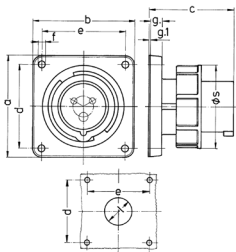


- screw terminals
- nickel plated contacts
- a retaining nose to hold the hinged lid of the connector must be provided by the customer in order to ensure satisfactory locking

Technical specifications

| | |
|---------------------------|------------------------|
| Ampere | 32 A |
| Poles | 4 p |
| Voltage | 500 V |
| Clock position | 7 h |
| Hertz | 50-60 Hz |
| Connection technology | Screw terminals |
| Contact | nickel plated contacts |
| Protection type | IP 67 |
| Weight | 256 g |
| Declaration of Conformity | EAC, CQC, VDE (ÜG) |

Drawing



| Drawing | Amp. | 16 | | | 32 | | |
|---|------|-------|------|------|------|------|------|
| | | Poles | | | | | |
| 2 MB 187/2 | | 3 | 4 | 5 | 3 | 4 | 5 |
| Dim. in mm | a | 85.7 | 85.7 | 85.7 | 85.7 | 85.7 | 85.7 |
| | b | 85.7 | 85.7 | 85.7 | 85.7 | 85.7 | 85.7 |
| | c | 72 | 72 | 72 | 90 | 90 | 90 |
| | d | 69.5 | 69.5 | 69.5 | 69.5 | 69.5 | 69.5 |
| | e | 69.5 | 69.5 | 69.5 | 69.5 | 69.5 | 69.5 |
| | f | 5.5 | 5.5 | 5.5 | 5.5 | 5.5 | 5.5 |
| | g. | 11 | 11 | 11 | 11 | 11 | 11 |
| | g.1 | 2 | 2 | 2 | 2 | 2 | 2 |
| | l | 32 | 36 | 47 | 47 | 47 | 47 |
| | s | 71 | 79 | 89 | 94 | 94 | 102 |
| Terminal for cond. cross section (mm ²) min.-max. | | 1.5 | 1.5 | 1.5 | 2.5 | 2.5 | 2.5 |
| | | -4 | -4 | -4 | -10 | -10 | -10 |