

Wall mounted inlet

Part no. 843

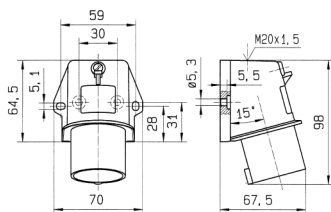


- screw terminals
- for internal or external fixing
- for hinged lids for retrofit see accessories

Technical specifications

Ampere	16 A
Poles	3 p
Voltage	110 V
Clock position	4 h
Hertz	50-60 Hz
Connection technology	Screw terminals
Contact	standard
Protection type	IP 44
Weight	116 g
Declaration of Conformity	VDE, EAC

Drawing



Drawing
2 MB 213
Dim. in mm