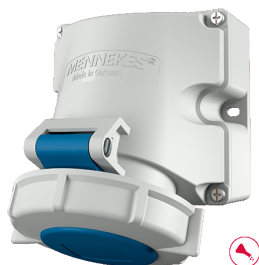


Wall mounted receptacle with TwinCONTACT

Part no. 9105

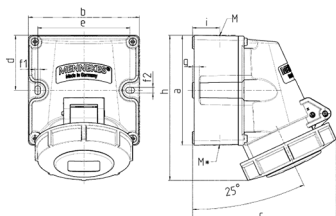


- screwless spring terminals
- highly resistant to chemicals
- suitable for through wiring
- with 2 external fixing points
- receptacles are designed for adding an auxiliary contact switch
- enclosure base can be turned 180°

Technical specifications

Ampere	16 A
Poles	3 p
Voltage	230 V
Clock position	6 h
Hertz	50-60 Hz
Connection technology	Screwless - TwinCONTACT
Contact	standard
Protection type	IP 67
Weight	320 g
Declaration of Conformity	VDE, EAC, CQC

Drawing



Drawing 1 MB 622	Amp. Poles	16			32		
		3	4	5	3	4	5
Dim. in mm	a	100	100	100	100	100	100
	b	101	101	101	109	109	109
	c	117	125	131	157	157	160
	d	50	50	50	50	50	50
	e	84	84	84	92	92	92
	f1	5.3	5.3	5.3	5.3	5.3	5.3
	f2	5.3	5.3	5.3	5.3	5.3	5.3
	g	6.5	6.5	6.5	6.5	6.5	6.5
	h	131	131	132	148	148	148
	i	24.7	24.7	24.7	27.5	27.5	27.5
	M	25 (optional M20)			32 (optional M25)		
M*	2x25 (blind) to be cut out			2x25 (blind) to be cut out			
Max. cable diam. (mm)	18 (M25) and 15 (M20)			25 (M32) and 18 (M25)			
Terminal for cond. cross section (mm²) min.-max.	1.5	1.5	1.5	2.5	2.5	2.5	
	-4	-4	-4	-6	-6	-6	