

Panel mounted receptacle CEEplus

Part no. 960

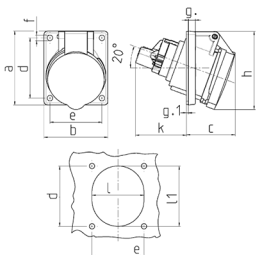


- screw terminals
- with 4 additional contacts
- 20° inclination

Technical specifications

Ampere	16 A
Poles	5 p+a
Voltage	400 V
Clock position	6 h
Hertz	50-60 Hz
Connection technology	Screw terminals
Contact	standard
Protection type	IP 44
Flange	85x85 mm
Fixing hole	70x70 mm
Inclination	20 °
Weight	200 g
Declaration of Conformity	EAC

Drawing



Drawing 1 MB 459/453	Amp. Poles	16	
		3	5
Dim. in mm	a	73.5	85
	b	64	85
	c	52	57
	d	60	70
	e	52	70
	f	5.3	5.5
	g	7	8
	g.1	2	2
	h	79	101
	k	51	33
	l	52	70
	l1	60	78
	a	20°	20°
Terminal for cond. cross section (mm²) min.-max.		1.5 —4	1.5 —4