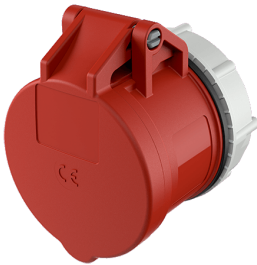


Panel mounted receptacle RAPIDO® CEEplus

Part no. 962

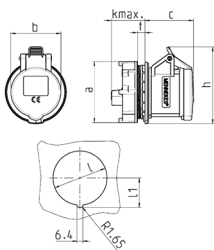


- screw terminals
- with 4 additional contacts
- straight
- centralized fastening Ø 61 mm

Technical specifications

Ampere	16 A
Poles	5 p+a
Voltage	400 V
Clock position	6 h
Hertz	50-60 Hz
Connection technology	Screw terminals
Contact	standard
Protection type	IP 44
Weight	200 g
Declaration of Conformity	EAC

Drawing



Drawing 1 MB 458/468	Amp. Poles	16	
		3	5
Dim. in mm	a	69	69
	b	57	69
	c	55	52
	d	38	32
	h	87	98
	k max.	30	32
	l	Ø61	Ø61
	l1	33.25	33.25
	t	2-9	2-9
Terminal for cond. cross		1.5	1.5
section (mm²) min.-max.		—4	—4