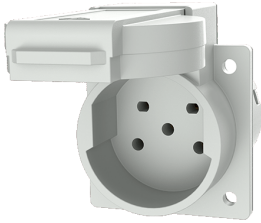


## Grounding-type panel mounted receptacle

Part no. 10086

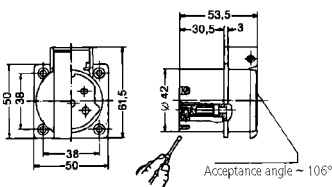


- Swiss standard
- type 15
- with hinged lid
- 5 screw terminals
- receptacle cannot be combined with enclosure base part no. 10714, 10715 or 10716

## Technical specifications

Ampere	10 A
Poles	5 p
Voltage	400 V
Connection technology	Screw terminals
Contact	standard
Protection type	IP 54
Shutter	false
Flange	50x50 mm
Fixing hole	38x38 mm
Weight	46 g
Declaration of Conformity	EAC

## Drawing



Drawing  
1 MB 424  
Dim. in mm