

## Panel mounted receptacle

Part no. 1045

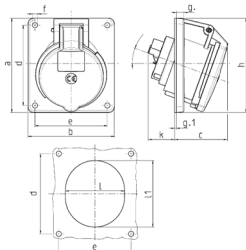


- screw terminals
- highly heat resistant contact carrier
- nickel plated contacts
- 20° inclination

## Technical specifications

Ampere	16 A
Poles	7 p
Voltage	500 V
Clock position	7 h
Hertz	50-60 Hz
Connection technology	Screw terminals
Contact	highly heat resistant contact carrier, nickel plated contacts
Protection type	IP 44
Flange	100x92 mm
Fixing hole	85x77 mm
Inclination	20 °
Weight	216 g
Declaration of Conformity	EAC, CQC

## Drawing



Drawing	Amp.	16		32	
		7		7	
1 MB 260	Poles				
Dim. in mm	a	100	100		
	b	92	92		
	c	58	61		
	d	85	85		
	e	77	77		
	f	5.5	5.5		
	g	8	8		
	g-1	2	2		
	h	100	106		
	k	40	55		
	l	65	72		
	l1	72	85		
	α	20°	20°		
Terminal for cond. cross		1.5	2.5		
section (mm²) min.-max.		—4	—10		