

## Panel mounted receptacle

Part no. 1095

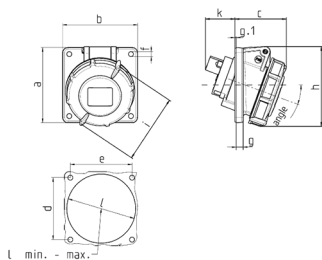


- screw terminals
- highly heat resistant contact carrier
- nickel plated contacts
- uniform fixing hole spacing
- suitable for through wiring
- 20° inclination
- receptacles are designed for adding an auxiliary contact switch

## Technical specifications

Ampere	16 A
Poles	7 p
Voltage	230 V
Clock position	9 h
Hertz	50-60 Hz
Connection technology	Screw terminals
Contact	standard
Protection type	IP 67
Flange	85x85 mm
Fixing hole	70x70 mm
Inclination	20 °
Weight	246 g
Declaration of Conformity	EAC

## Drawing



Drawing	Amp.	16	32
1 MB 452	Poles	7	7
Dim. in mm	a	85	85
	b	85	85
	c	60	72
	d	70	70
	e	70	70
	f	5.5	5.5
	g	8	8
	g-1	2	2
	h	99	110
	i	96	110
	k	41	49
	l min.	70	78
	l max.	78	78
Terminal for cond. cross section (mm <sup>2</sup> ) min.-max.		1.5	2.5
		-4	-10