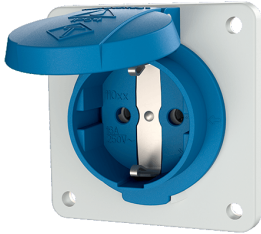


## Panel mounted receptacle SCHUKO®

Part no. 11011F

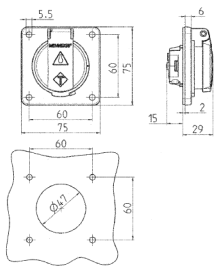


- for stationary use
- with hinged lid
- also suitable for cable ducts and flush mounted installation boxes
- 3 plug-in terminals as connecting terminals for 1.5 – 2.5 mm<sup>2</sup>

### Technical specifications

Ampere	16 A
Poles	2 p+E
Voltage	230 V
Connection technology	Plug-in terminals
Contact	standard
Protection type	IP 54
Shutter	false
Flange	75x75 mm
Fixing hole	60x60 mm
Weight	65 g
Declaration of Conformity	VDE, EAC

### Drawing



Drawing  
1 MB 593

Dim. in mm