

## Panel mounted receptacle SCHUKO®

Part no. 11313

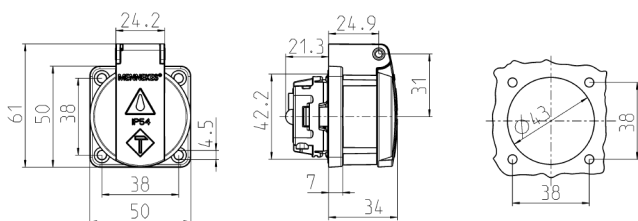


- for portable use
- with front gasket
- with hinged lid
- 3 plug-in terminals as connecting terminals for 1.5 – 2.5 mm<sup>2</sup>
- other colours on request

### Technical specifications

|                           |                   |
|---------------------------|-------------------|
| Ampere                    | 16 A              |
| Poles                     | 2 p+E             |
| Voltage                   | 230 V             |
| Connection technology     | Plug-in terminals |
| Contact                   | standard          |
| Protection type           | IP 54             |
| Shutter                   | false             |
| Flange                    | 50x50 mm          |
| Fixing hole               | 38x38 mm          |
| Weight                    | 60 g              |
| Declaration of Conformity | VDE, EAC          |

### Drawing



Drawing  
1 MB 5861

Dim. in mm