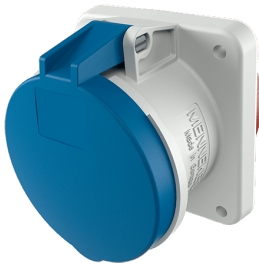


Panel mounted receptacle

Part no. 1251A



- screw terminals
- **X-CONTACT**
- straight
- products with pilot contact on request

Technical specifications

Ampere	63 A
Poles	5 p
Voltage	230 V
Clock position	9 h
Hertz	50-60 Hz
Connection technology	Screw terminals
Contact	X-CONTACT®
Protection type	IP 44
Flange	107x100 mm
Fixing hole	85x77 mm
Weight	620 g
Declaration of Conformity	VDE, EAC, CQC

Drawing



Drawing 1 MB 211	Amp. Poles	63		
		3	4	5
Dim. in mm	a	107	107	107
	b	100	100	100
	c	80	80	80
	d	85	85	85
	e	77	77	77
	f	6	6	6
	g.	12	12	12
	g.1	2	2	2
	h	113	113	113
	k	55	55	55
	l	88	88	88
Terminal for cond. cross section (mm ²) min.-max.		6	6	6
		-25	-25	-25