

Panel mounted receptacle with TwinCONTACT

Part no. 1350

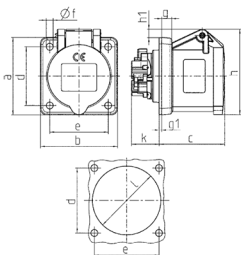


- screwless spring terminals
- suitable for through wiring
- straight

Technical specifications

| | |
|---------------------------|-------------------------|
| Ampere | 16 A |
| Poles | 3 p |
| Voltage | 230 V |
| Clock position | 6 h |
| Hertz | 50-60 Hz |
| Connection technology | Screwless - TwinCONTACT |
| Contact | standard |
| Protection type | IP 44 |
| Flange | 62x62 mm |
| Fixing hole | 47x47 mm |
| Weight | 100 g |
| Declaration of Conformity | VDE, EAC |

Drawing



| Drawing 1 MB 649 | Amp. Poles | 16 | | |
|--|---------------|-----|-----|-----|
| | | 3 | 4 | 5 |
| Dim. in mm | a | 62 | 72 | 72 |
| | b | 62 | 65 | 65 |
| | c | 54 | 54 | 54 |
| | d | 47 | 52 | 52 |
| | e | 47 | 52 | 52 |
| | f | 5.5 | 5.5 | 5.5 |
| | g | 8 | 8 | 8 |
| | g1 | 2 | 2 | 2 |
| | h | 68 | 77 | 85 |
| | h1 | 7 | 7 | 11 |
| | k | 23 | 23 | 23 |
| | l | 50 | 52 | 57 |
| Terminal for cond. cross section (mm ²) min.-max. | | 1.5 | 1.5 | 1.5 |
| | | -4 | -4 | -4 |