

Panel mounted receptacle

Part no. 1459

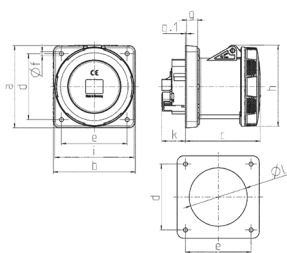


- flange 63 A: 107 x 100 mm
- **X-CONTACT**
- 125 A: 130 x 130 mm
- straight

Technical specifications

Ampere	125 A
Poles	5 p
Voltage	110 V
Clock position	4 h
Hertz	50-60 Hz
Connection technology	Screw terminals
Contact	X-CONTACT®
Protection type	[ClassificationAttributeValueModel (8796126610016@50), ClassificationAttributeValueModel (8796126610016@50)]
Shutter	false
Flange	130x130 mm
Fixing hole	104x104 mm
Weight	1256 g
Declaration of Conformity	VDE, EAC, CQC

Drawing



Drawing 1 MB 258 Dim. in mm	Amp. Poles	125	
		4	5
a		130	130
b		130	130
c		119	119
d		104	104
e		104	104
f		6.5	6.5
g		18	18
g.1		2	2
h		129	129
i		126	126
k		43	43
l		98	98
Terminal for cond. cross section (mm ²) min.-max.		25	25
		-70	-70