

## Panel mounted receptacle

Part no. 1460

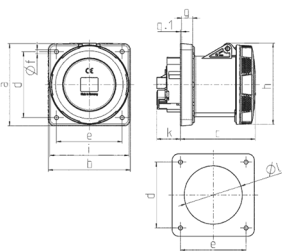


- screw terminals
- **X-CONTACT**
- straight
- receptacles with pilot contact: part no. + index P

## Technical specifications

Ampere	125 A
Poles	5 p
Voltage	230 V
Clock position	9 h
Hertz	50-60 Hz
Connection technology	Screw terminals
Contact	X-CONTACT®
Protection type	IP 67
Flange	130x130 mm
Fixing hole	104x104 mm
Weight	1256 g
Declaration of Conformity	VDE, EAC, CQC

## Drawing



Drawing 1 MB 258	Amp. Poles	125	
		4	5
Dim. in mm	a	130	130
	b	130	130
	c	119	119
	d	104	104
	e	104	104
	f	6.5	6.5
	g.	18	18
	g.1	2	2
	h	129	129
	i	126	126
	k	43	43
	l	98	98
Terminal for cond. cross section (mm <sup>2</sup> ) min.-max.		25	25
		-70	-70