

## Panel mounted receptacle

Part no. 1475

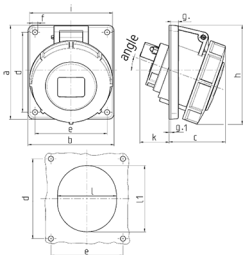


- screw terminals
- 20° inclination
- 32 A receptacles optional fitted with auxiliary contact

## Technical specifications

Ampere	16 A
Poles	3 p
Voltage	230 V
Clock position	6 h
Hertz	50-60 Hz
Connection technology	Screw terminals
Contact	standard
Protection type	IP 67
Flange	73.5x64 mm
Fixing hole	60x52 mm
Inclination	20 °
Weight	151 g
Declaration of Conformity	VDE, EAC, Kema, CQC

## Drawing



Drawing 1 MB 251 Dim. in mm	Amp. Poles	16			32		
		3	4	5	3	4	5
a		73.5	100	100	100	100	100
b		64	92	92	92	92	92
c		52	60	62	64	64	66
d		60	85	85	85	85	85
e		52	77	77	77	77	77
f		5.5	5.5	5.5	5.5	5.5	5.5
g		8	8	8	8	8	8
g.1		2	2	2	2	2	2
h		84	100	105	109	109	113
i		78	85	96	103	103	110
k		49	32	32	53	53	45
l		52	55	65	67	67	72
lt		60	63	72	82	82	85
α		20°	20°	20°	20°	20°	20°
Terminal for cond. cross section (mm <sup>2</sup> ) min.-max.		1.5	1.5	1.5	2.5	2.5	2.5
		-4	-4	-4	-10	-10	-10