

Panel mounted receptacle

Part no. 1551

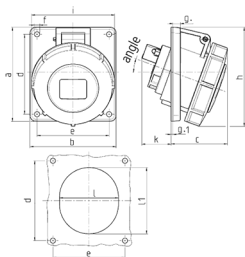


- screw terminals
- 20° inclination
- 32 A receptacles optional fitted with auxiliary contact

Technical specifications

| | |
|---------------------------|-----------------|
| Ampere | 32 A |
| Poles | 5 p |
| Voltage | 400 V |
| Clock position | 6 h |
| Hertz | 50-60 Hz |
| Connection technology | Screw terminals |
| Contact | standard |
| Protection type | IP 67 |
| Flange | 100x92 mm |
| Fixing hole | 85x77 mm |
| Inclination | 20 ° |
| Weight | 334 g |
| Declaration of Conformity | VDE, EAC, CQC |

Drawing



| Drawing 1 MB 251 | Amp. Poles | 16 | | | 32 | | |
|--|---------------|------|-----|-----|-----|-----|-----|
| | | 3 | 4 | 5 | 3 | 4 | 5 |
| Dim. in mm | a | 73.5 | 100 | 100 | 100 | 100 | 100 |
| | b | 64 | 92 | 92 | 92 | 92 | 92 |
| | c | 52 | 60 | 62 | 64 | 64 | 66 |
| | d | 60 | 85 | 85 | 85 | 85 | 85 |
| | e | 52 | 77 | 77 | 77 | 77 | 77 |
| | f | 5.5 | 5.5 | 5.5 | 5.5 | 5.5 | 5.5 |
| | g | 8 | 8 | 8 | 8 | 8 | 8 |
| | g.1 | 2 | 2 | 2 | 2 | 2 | 2 |
| | h | 84 | 100 | 105 | 109 | 109 | 113 |
| | i | 78 | 85 | 96 | 103 | 103 | 110 |
| | k | 49 | 32 | 32 | 53 | 53 | 45 |
| | l | 52 | 55 | 65 | 67 | 67 | 72 |
| | lt | 60 | 63 | 72 | 82 | 82 | 85 |
| | α | 20° | 20° | 20° | 20° | 20° | 20° |
| Terminal for cond. cross section (mm ²) min.-max. | | 1.5 | 1.5 | 1.5 | 2.5 | 2.5 | 2.5 |
| | | -4 | -4 | -4 | -10 | -10 | -10 |