

Panel mounted receptacle with TwinCONTACT

Part no. 155

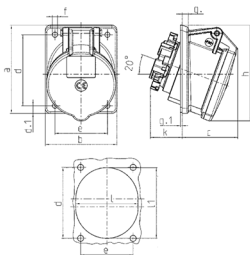


- screwless spring terminals
- suitable for through wiring
- 20° inclination

Technical specifications

Ampere	16 A
Poles	4 p
Voltage	500 V
Clock position	7 h
Hertz	50-60 Hz
Connection technology	Screwless - TwinCONTACT
Contact	standard
Protection type	IP 44
Flange	87x71 mm
Fixing hole	70x52 mm
Inclination	20 °
Weight	134 g
Declaration of Conformity	EAC

Drawing



Drawing 1 MB 650	Amp. Poles	16	
		4	5
Dim. in mm	a	87	87
	b	71	71
	c	58	57
	d	70	70
	d.1	7.5	7.5
	e	52	52
	f	5.1	5.1
	g	6	6
	g.1	2	2
	h	92	95
	k	31	32
	l	61	62
	l1	-	72
Terminal for cond. cross section (mm²) min.-max.		1.5	1.5
		-4	-4