

Panel mounted receptacle SCHUKO®

Part no. 17006

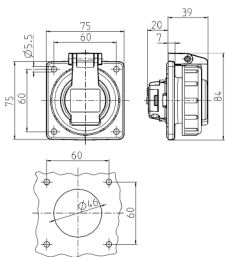


- screw terminals
- hinged bayonet lock lid
- rectangular flange
- four fixing holes

Technical specifications

Ampere	16 A
Poles	2 p+E
Voltage	230 V
Connection technology	Screw terminals
Contact	standard
Protection type	IP 68
Shutter	false
Flange	75x75 mm
Fixing hole	60x60 mm
Weight	108 g
Declaration of Conformity	VDE, EAC

Drawing



Drawing
1 MB 627

Dim. in mm