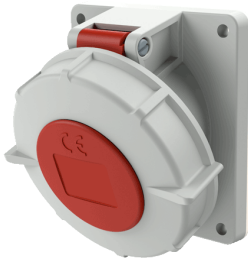


## Panel mounted receptacle with TwinCONTACT

Part no. 1805

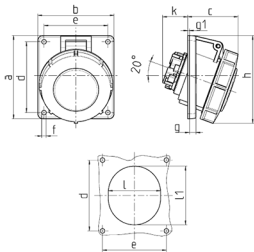


- screwless spring terminals
- suitable for through wiring
- 20° inclination
- receptacles are designed for adding an auxiliary contact switch

### Technical specifications

Ampere	32 A
Poles	4 p
Voltage	400 V
Clock position	6 h
Hertz	50-60 Hz
Connection technology	Screwless - TwinCONTACT
Contact	standard
Protection type	IP 67
Flange	100x92 mm
Fixing hole	85x77 mm
Inclination	20 °
Weight	290 g
Declaration of Conformity	EAC, CQC

### Drawing



Drawing 1 MB 466 Dim. in mm	Amp. Poles	16			32		
		3	4	5	3	4	5
a		73.5	100	100	100	100	100
b		64	92	92	92	92	92
c		52	60	62	66	66	66
d		60	85	85	85	85	85
e		52	77	77	77	77	77
f		5.5	5.5	5.5	5.5	5.5	5.5
g		7	8	8	8	8	8
g-1		2	2	2	2	2	2
h		84	100	106	109	109	113
k		31	31	31	44	44	54
l		52	55	65	70	70	73
l1		60	63	72	82	82	85
Terminal for cond. cross section (mm <sup>2</sup> ) min.-max.		1.5	1.5	1.5	2.5	2.5	2.5
		-4	-4	-4	-6	-6	-6