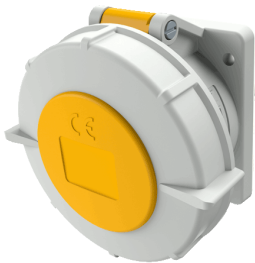


## Panel mounted receptacle with TwinCONTACT

Part no. 1818

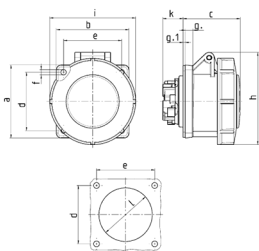


- screwless spring terminals
- suitable for through wiring
- straight

### Technical specifications

|                           |                         |
|---------------------------|-------------------------|
| Ampere                    | 32 A                    |
| Poles                     | 5 p                     |
| Voltage                   | 110 V                   |
| Clock position            | 4 h                     |
| Hertz                     | 50-60 Hz                |
| Connection technology     | Screwless - TwinCONTACT |
| Contact                   | standard                |
| Protection type           | IP 67                   |
| Flange                    | 85x75 mm                |
| Fixing hole               | 60x60 mm                |
| Weight                    | 287 g                   |
| Declaration of Conformity | EAC, CQC                |

### Drawing



| Drawing<br>1 MB 467  | Amp.<br>Poles | 16  |     |     | 32  |     |     |
|--|---------------|-----|-----|-----|-----|-----|-----|
|  |               | 3   | 4   | 5   | 3   | 4   | 5   |
| Dim. in mm   | a             | 75  | 75  | 75  | 85  | 85  | 85  |
|  | b             | 75  | 75  | 75  | 75  | 75  | 75  |
|  | c             | 60  | 61  | 61  | 69  | 69  | 72  |
|  | d             | 60  | 60  | 60  | 60  | 60  | 60  |
|  | e             | 60  | 60  | 60  | 60  | 60  | 60  |
|  | f             | 5.5 | 5.5 | 5.5 | 5.5 | 5.5 | 5.5 |
|  | g             | 8   | 8   | 8   | 8   | 8   | 8   |
|  | g-1           | 2   | 2   | 2   | 2   | 2   | 2   |
|  | h             | 83  | 88  | 95  | 99  | 99  | 105 |
|  | i             | 78  | 85  | 96  | 103 | 103 | 110 |
|  | k             | 21  | 21  | 21  | 28  | 28  | 38  |
|  | l             | 43  | 52  | 54  | 60  | 60  | 65  |
| Terminal for cond. cross<br>section (mm <sup>2</sup> ) min.-max. |               | 1.5 | 1.5 | 1.5 | 2.5 | 2.5 | 2.5 |
|  |               | -4  | -4  | -4  | -6  | -6  | -6  |