

Power post enclosure

Part no. 18502AZ



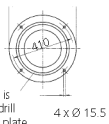
- from steel tube
- wall thickness 4.5 mm
- hot-dip galvanised
- wet painted
- colour: anthracite
- iron glitter DB 703
- hinged supply aperture
- with safety lock
- dimensions (H x Ø): 1400 x 325 mm (inside)
- weight: approx. 100 kg
- aperture at bottom: (H x W) 50 x 100 mm
- fixing flange: Ø 450 mm
- with 4 fixing holes 15 mm
- for fixing to an existing fundament

Technical specifications

Weight	80000 g
Declaration of Conformity	EAC

Drawing

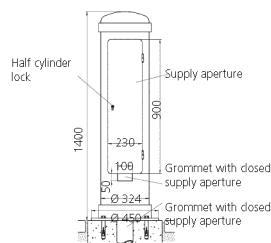
Top view of the bottom plate



The supply aperture is located between 2 drill holes in the bottom plate

4 x Ø 15.5

Part no. 18502AZ
Colour: anthracite



Drawing
1 MB 445

Dim. in mm