

Wall mounted inlet

Part no. 1955

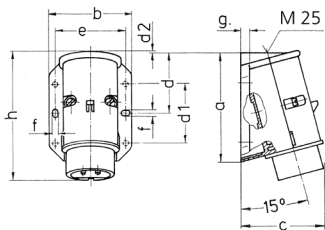


- screw terminals
- external fixing
- one cable entry at top and one blind cable entry (can be cut out) at the back side

Technical specifications

| | |
|---------------------------|-----------------|
| Ampere | 16 A |
| Poles | 2 p |
| Voltage | 20-25 V |
| Hertz | 50-60 Hz |
| Connection technology | Screw terminals |
| Contact | standard |
| Protection type | IP 44 |
| Weight | 144 g |
| Declaration of Conformity | EAC |

Drawing



| Drawing 2 MB 160 | Amp. Poles | 16 | | 32 | |
|---|---------------|-----|-----|-----|-----|
| | | 2 | 3 | 2 | 3 |
| Dim. in mm | a | 96 | 96 | 96 | 96 |
| | b | 73 | 73 | 73 | 73 |
| | c | 74 | 74 | 74 | 74 |
| | d | 53 | 53 | 53 | 53 |
| | d1 | 52 | 52 | 52 | 52 |
| | d2 | 2 | 2 | 2 | 2 |
| | e | 62 | 62 | 62 | 62 |
| | f | 5.3 | 5.3 | 5.3 | 5.3 |
| | g | 8 | 8 | 8 | 8 |
| | h | 116 | 116 | 116 | 116 |
| Terminal for cond. cross section (mm ²) min.-max. | | 4 | 4 | 4 | 4 |
| | | -10 | -10 | -10 | -10 |